



## REGIONAL SPECIALISED METEOROLOGICAL CENTRE -TROPICAL CYCLONES, NEW DELHI TROPICAL WEATHER OUTLOOK

**DEMS-RSMC TROPICAL CYCLONES NEW DELHI DATED 31.08.2025**

**TROPICAL WEATHER OUTLOOK FOR THE NORTH INDIAN OCEAN (THE BAY OF BENGAL AND THE ARABIAN SEA) VALID FOR THE NEXT 168 HOURS ISSUED AT 0600 UTC OF 31.08.2025 BASED ON 0300 UTC OF 31.08.2025.**

### **BAY OF BENGAL:**

An upper air cyclonic circulation lay over northwest Bay of Bengal off West Bengal – Odisha coasts at 0300 UTC of today, the 31<sup>st</sup> August between 1.5 & 5.8 km above mean sea level tilting southwestwards with height. Under its influence a fresh Low Pressure area is likely to form over northwest Bay of Bengal around 02nd September, 2025.

Scattered to broken low and medium clouds with embedded intense to very intense convection lay over central & south Bay of Bengal and Andaman Sea. Scattered low and medium clouds with embedded moderate to intense convection lay over north Bay of Bengal.

### **\*PROBABILITY OF CYCLOGENESIS (FORMATION OF DEPRESSION) DURING NEXT 168 HRS:**

24 HOURS	24-48 HOURS	48-72 HOURS	72-96 HOURS	96-120 HOURS	120-144 HOURS	144-168 HOURS
NIL	NIL	NIL	NIL	NIL	NIL	NIL

**\*NOTE: EVERY 24HR FORECAST IS VALID UPTO 0300 UTC (0830 IST) OF NEXT DAY**

### **ARABIAN SEA:**

Scattered low and medium clouds with embedded moderate to intense convection lay over Gulf of Kutch, Gulf of Cambay & Maldives. Scattered low and medium clouds with embedded weak to moderate convection lay over Arabian Sea, Lakshadweep Islands & Comorin area.

### **\*PROBABILITY OF CYCLOGENESIS (FORMATION OF DEPRESSION) DURING NEXT 168 HRS:**

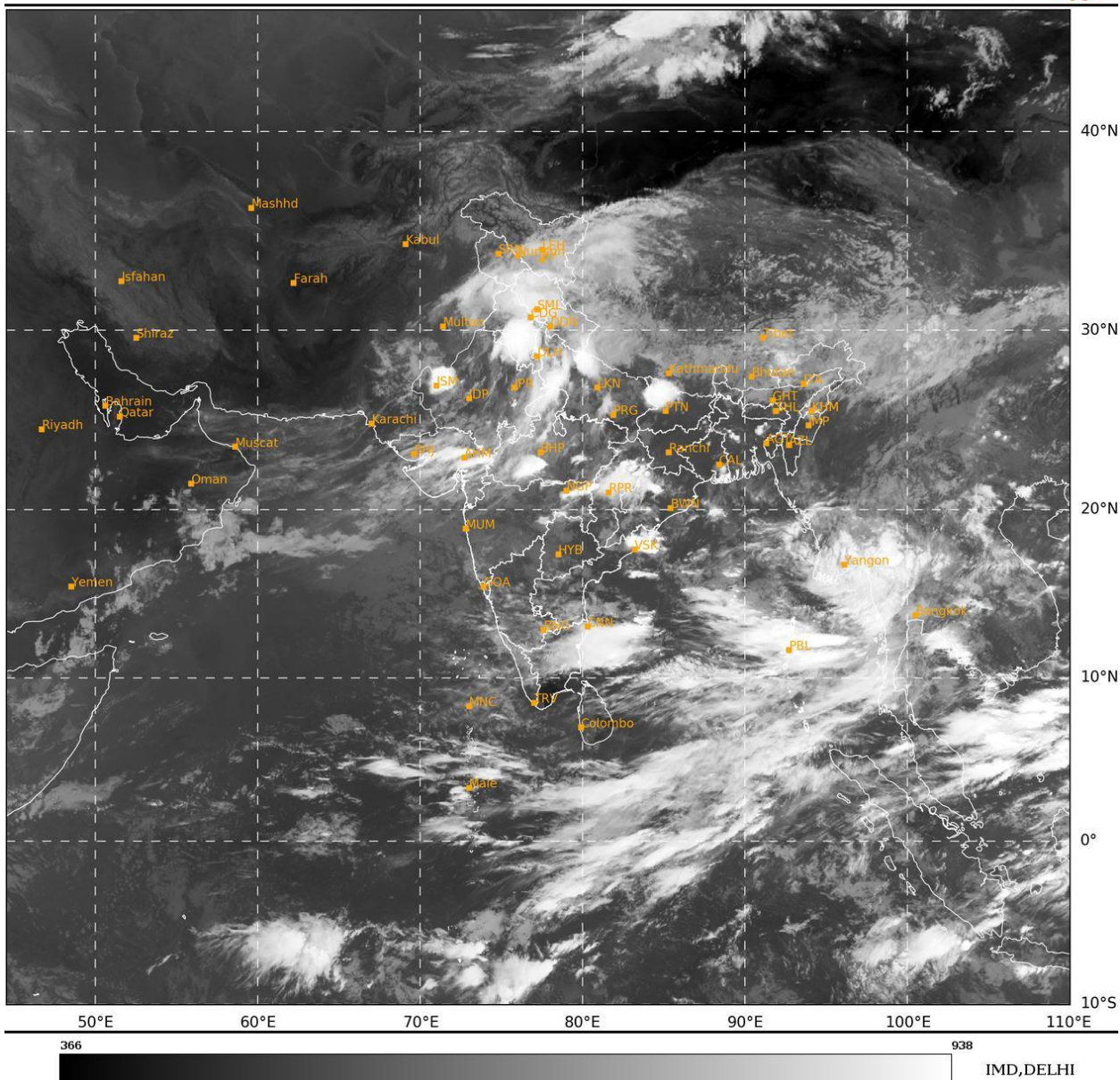
24 HOURS	24-48 HOURS	48-72 HOURS	72-96 HOURS	96-120 HOURS	120-144 HOURS	144-168 HOURS
NIL	NIL	NIL	NIL	NIL	NIL	NIL

**\*NOTE: EVERY 24HR FORECAST IS VALID UPTO 0300 UTC (0830 IST) OF NEXT DAY**

**REMARKS: NIL**

SAT : INSAT-3DR IMG  
 IMG\_TIR1 10.8 um  
 L1C Mercator

31-08-2025/(0315 to 0342) GMT  
 31-08-2025/(0845 to 0912) IST



Cloud distribution: (a) Isolated: <25%, Scattered:25-50%, Broken: 51-75%, Solid:>75%, Convection Intensity: (a) Weak: Cloud Top Temperature(CTT)>-25°C,(b)Moderate:CTT:-25°Cto-40°C,(c)Intense:CTT: -41°Cto -70°Cand(d)Very Intense::Less than -70°C  
 PROBABILITYOFCYCLOGENESIS(FORMATIONOFDEPRESSION):NIL:0%,LOW:1-33%,MODERATE:34-66%ANDHIGH:67-100%  
 ThisisaguidanceBulletinforWMO/ESCAPPanelMembercountries.VisitrespectiveNationalwebsitesforCountryspecificBulletins